



RITA FRANCO
INTERIOR DESIGN PORTFOLIO



CONTENTS

Commercial Projects	3
Public Space Hotel Bar	4
Public Space Hotel Pop Up	5
Styling Projects	6
To Sell	7
To Keep	8
Residential Projects	9
Waverton	10
MCM House	14
Woolloomooloo Warehouse	15
Marrickvile	16

COMMERCIAL PROJECTS

PUBLIC SPACE

HOTEL BAR

BRIEF

The objective of the project was to create a scheme that will enhance the guest experience and align it with the hotel's branding strategy. The Hotel Bar was designed to reflect the Victorian aesthetic, inspired by the terrace housing.



Floorplan



Material Board



Sections



PUBLIC SPACE

HOTEL POP UP

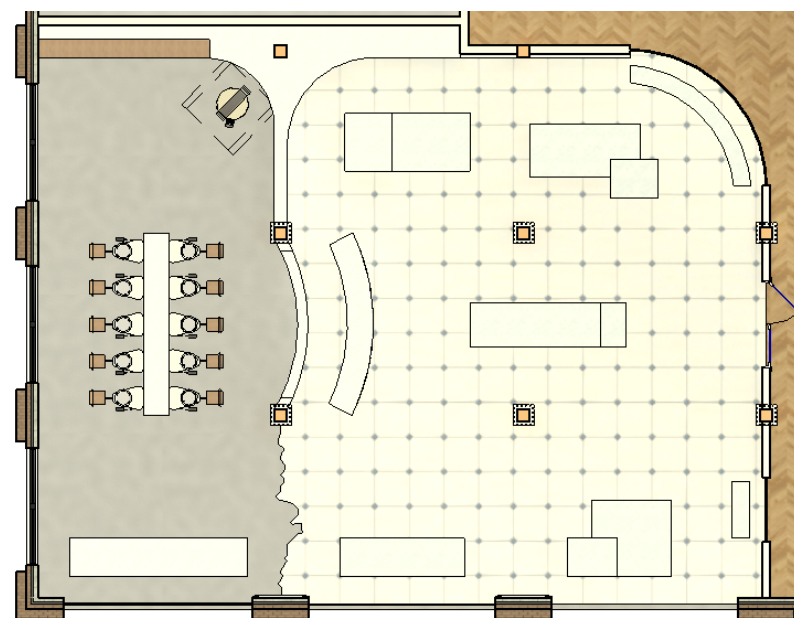
BRIEF

The objective of the project was to create a scheme that will enhance the guest experience and align it with the hotel's branding strategy. The Pop Up was inspired by the filigree designs you find in terrace housing gates and railings. The Pop Up offers the guests to either purchase antique vintage pottery pots and vases or create their own in the pottery studio at the back.



Concept Board

Concept Model



Floorplan

Sections

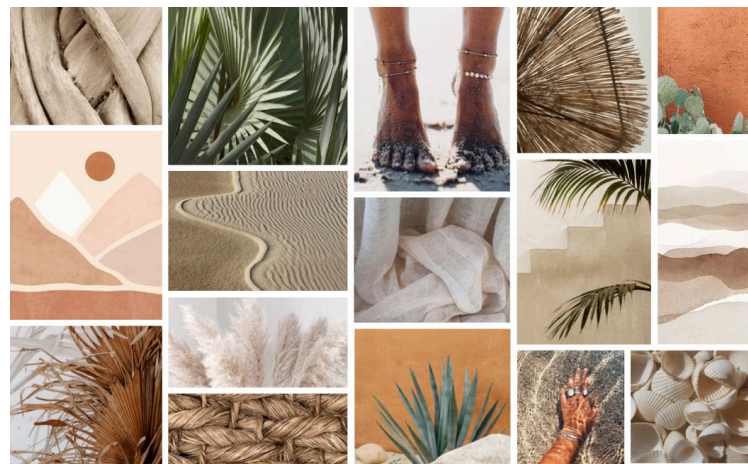
STYLING PROJECTS

STYLING TO SELL

BRIEF

Dakota Brent at Luxcon developments is preparing to sell the apartments off the plan with the Belle property group in Byron Bay. There is a high demand for property in the area as people from the city are seeking a seachange lifestyle to work from home. Byron Bay is a beachside town renowned for its easy-going boho lifestyle and laidback village vibe.

The objective was to create a display apartment for the main bedroom with a modern/transitional style combined with a high end boho coastal lifestyle.



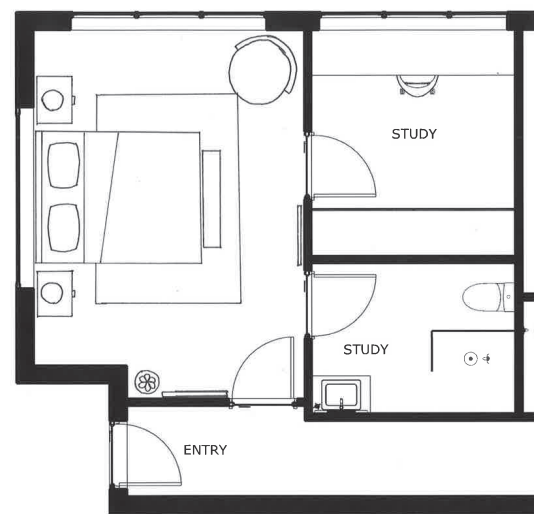
Moodboard



Styleboard



Furniture Collage



Floorplan



Pictorial Floorplan



Perspective

RESIDENTIAL PROJECTS

WAVERTON PROJECT

BRIEF

A small family that purchased a site/property to be demolished with approved plans for a proposed duplex/semi-detached property in Waverton. Their wish is to establish a stable home for their growing family after travelling and living overseas for so many years. They enjoy a cosmopolitan lifestyle having lived in Dubai, Tokyo, Paris, Lisbon and Johannesburg and are both design aficionados, collecting local emerging and established designer's work in their travels.

The objective was to furnish and decorate their new home in 3 different stages.

A living area which can accommodate large groups of people and have the interior space seamlessly flow into the exterior space in a vibrant and cosmopolitan aesthetic.

A work/stay space flexible so that it can serve both a guest room and a home office, with an aesthetic that evokes a sense of calm and comfortableness.

And a nursery bedroom with a soft design.

SITE ANALYSIS WAVERTON



Site Analysis



Exterior Elevation



Section 1



Section 2



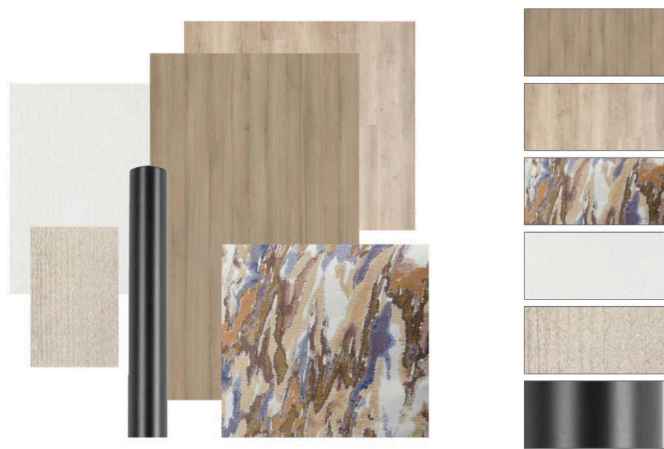
WAVERTON PROJECT

LIVING AREA



Concept Board

Floorplan - Ground



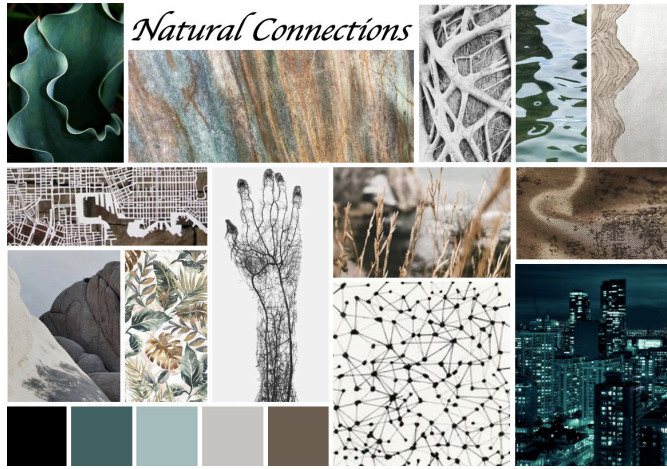
Material Board - Living room

Material Board - Alfresco Terrace

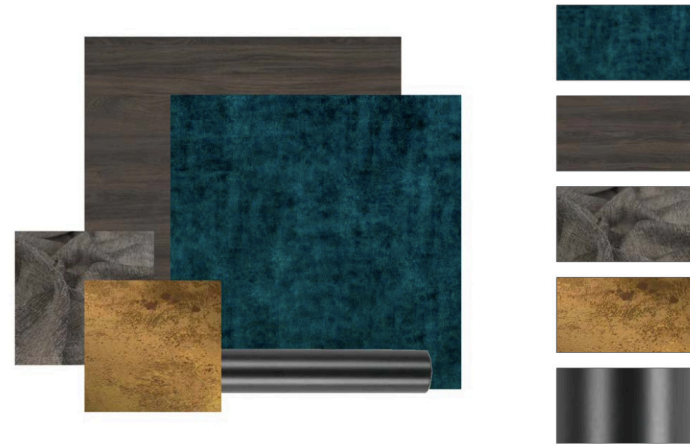


WAVERTON PROJECT

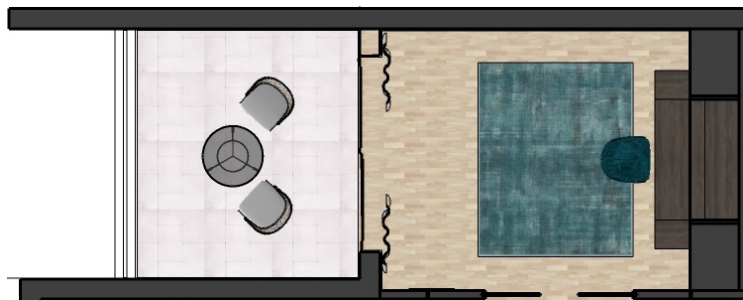
WORK/STAY SPACE



Concept Board



Material Board



Floorplan - Level 1

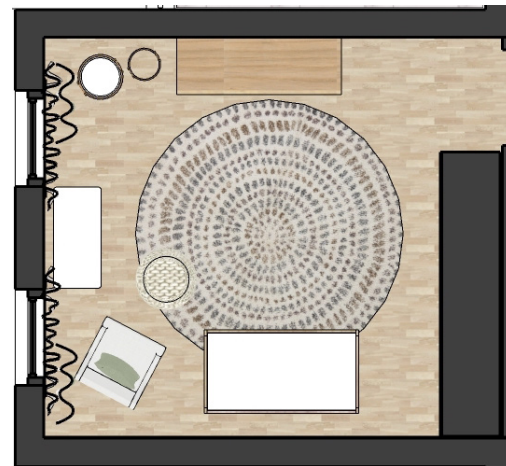


Floorplan - Level 1 (bed open)



WAVERTON PROJECT

NURSERY



Concept Board

Floorplan



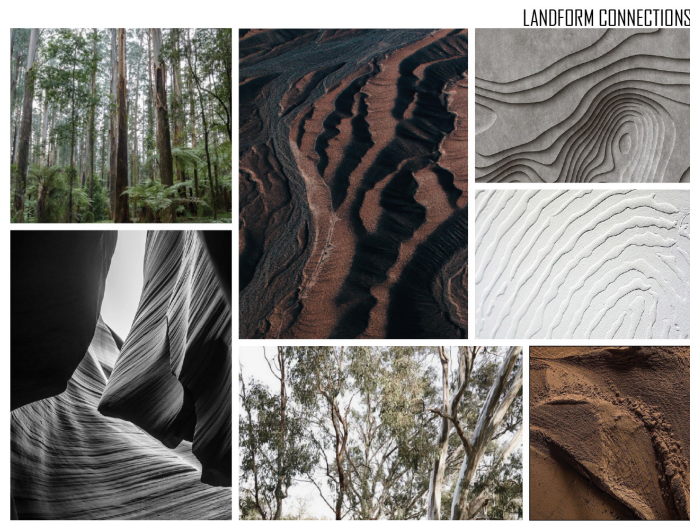
Material Boards



MCM HOUSE

BRIEF

The objective for this project was to redesign a mid-century modern house for a renowned creative professional to support aging in place, modern living, and sustainability, including a curated art and furniture collection and a self-contained unit on the lower level.



Concept Board



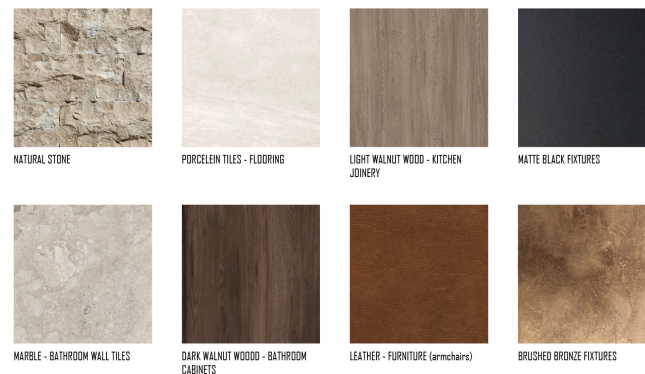
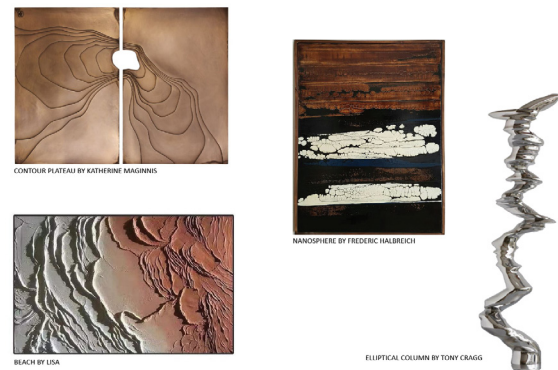
Rendered Perspective



Floorplan - Level 1



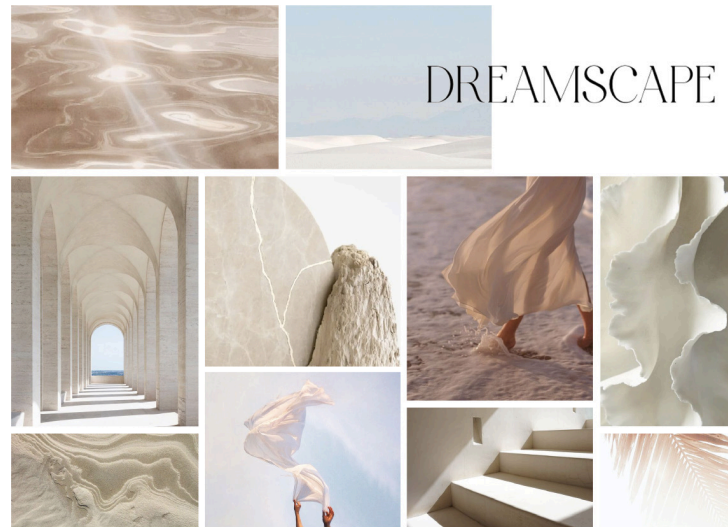
Floorplan - Subfloor



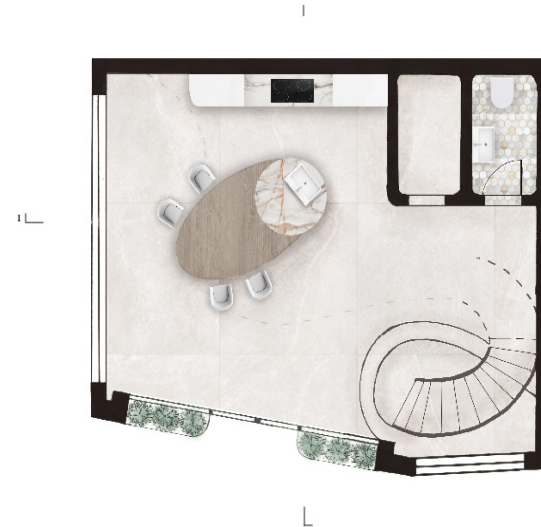
WOOLLOOMOOLOO WAREHOUSE

BRIEF

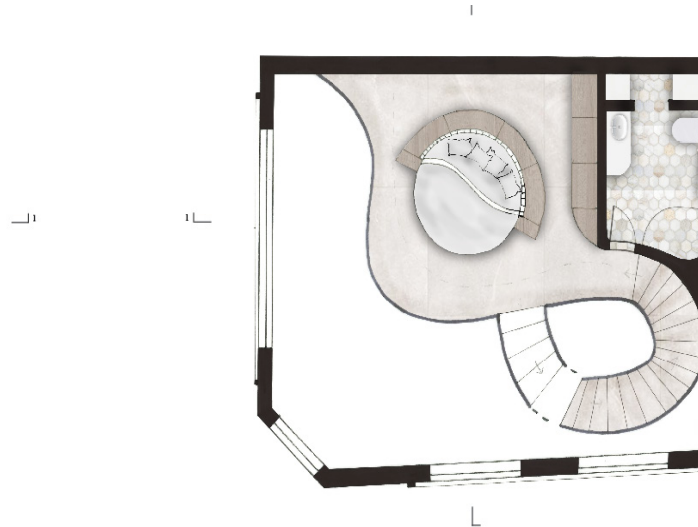
The objective for this warehouse project was to design a haven for an internationally respected fashion agent, featuring a work/consultant space with space for private showings and dedicated areas for relaxation, self-care, and meditation, incorporating artwork and thoughtful lighting design.



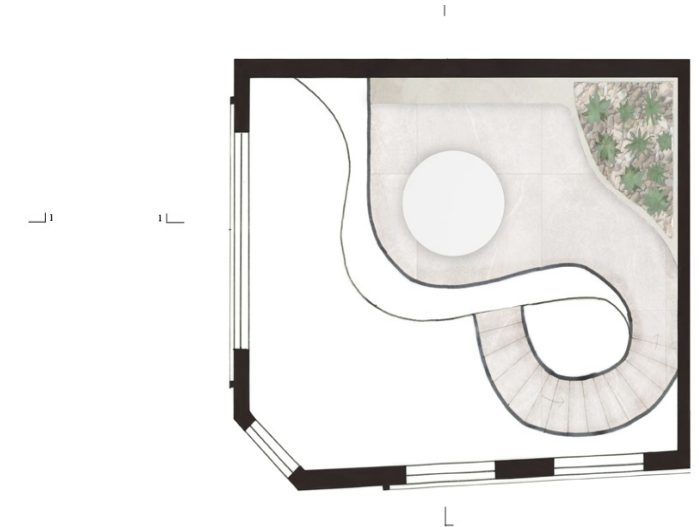
Concept Board



Floorplan - Ground



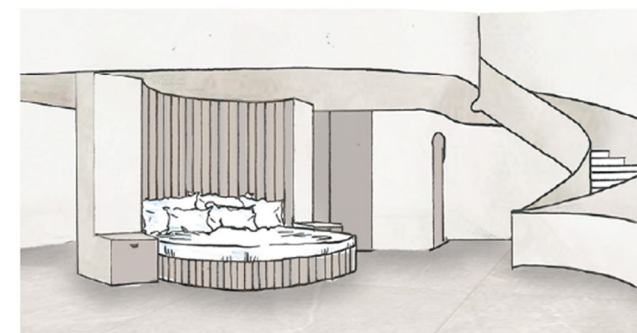
Floorplan - Level 1



Floorplan - Level 2



Sections

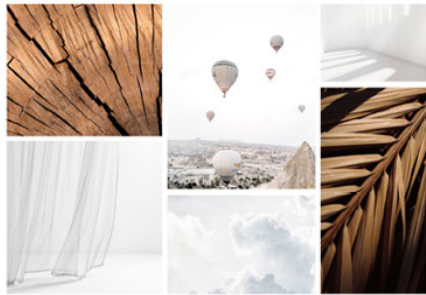


MARRICKVILLE PROJECT

BRIEF

The objective for this project was to renovate a single-story house for a small family in 3 stages to include a new kitchen, bathroom, and stairs to the upper-level office with a focus on sustainability, using ethically sourced and low VOC materials, integrating renewable energy and energy-efficient appliances, while ensuring ample storage and composting solutions in the kitchen.

Brief 1 | Stairs



Brief 2 | Kitchen



Brief 3 | Bathroom



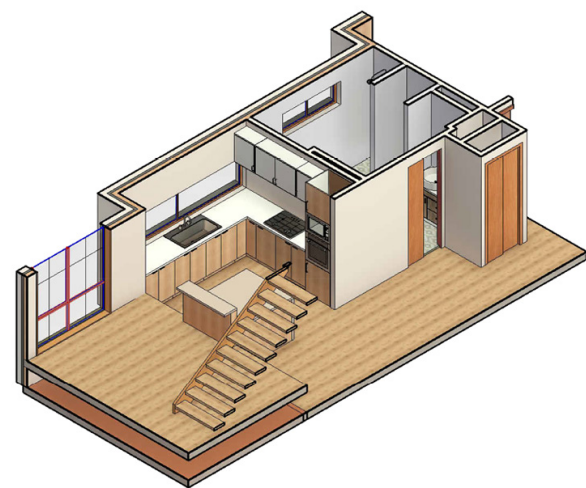
Concepts and Material Board



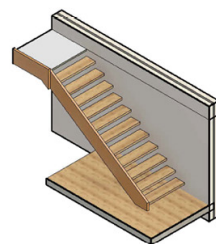
Floorplan



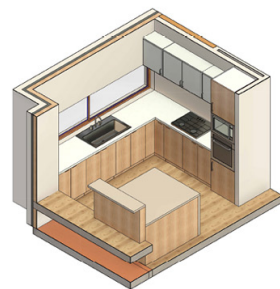
Kitchen Perspectives



Brief 1 | Stairs



Brief 2 | Kitchen



Brief 3 | Bathroom



3D Isometric Views



Bathroom Perspectives



RITA FRANCO
INTERIOR DESIGN
PORTFOLIO

✉ ritafrancodesigns@gmail.com

 www.linkedin.com/in/rita-f-90b470312

 [@rfrancodesigns](https://www.instagram.com/rfrancodesigns)